



## 10120AP Pneumatically Operated Deadlatch



# Pneumatic Locks

For More information please call 210-123-4567



# Pneumatic Locks

## 10120AP Pneumatically Operated Deadlatch



### STANDARD FEATURES

- Deadlock indication switch
- Mechanical latchback
- Six tumbler lock
- Plug connector
- Solenoid valve
- Fail secure
- Mounting fasteners
- Mechanical key holdback
- Adjustable roller bolt

**10120AP-1: KEYED ONE SIDE**  
**10120AP-2: KEYED BOTH SIDES**

### APPLICATION

Medium and maximum security swinging doors that are to be unlocked from a remote location. Jamb mounted. Door position indicator switch, door closer and heavy duty door pull are recommended.

### FUNCTION

**ELECTRIC** - Remote switch activates a pneumatic cylinder which retracts the latchbolt. Latchbolt remains retracted until door is opened approximately 2", then it releases, automatically latches and deadlocks when the door is closed.

**MECHANICAL** - Latchbolt is retracted with a mogul key at the door, and remains retracted until door is opened approximately 2", then it releases, automatically latches and deadlocks when the door is closed.

### OPTIONAL FEATURES

**NO LATCHBACK** - Latchbolt remains retracted as long as control switch is activated. Latchbolt extends when power is removed. Specify "NL."

**EMERGENCY EXIT DOOR HOLDBACK** - Deadbolt retracted by solenoid or by key, extended by key only (no snaplatch feature). When deadbolt is extended, lock is deadlocked. Specify "EED." UL listing not available with this function.

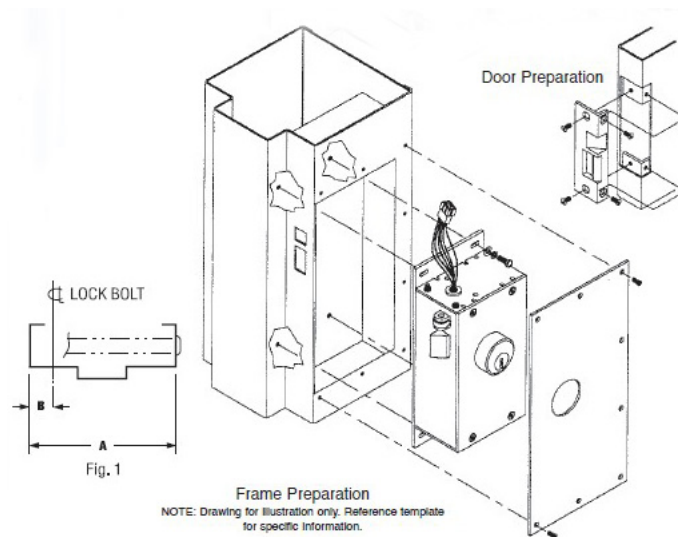
**EMERGENCY EXIT RELEASE** From remote location latchbolt can be retracted and held retracted until released from remote station. Requires a second pneumatic tube to the lock and an emergency reserve air system. Specify "EER." UL listing not available with this function.



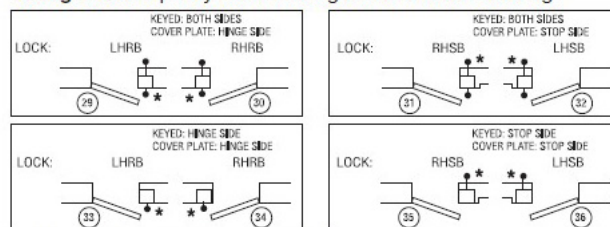
For More information please call 210-123-4567

# Pneumatic Locks

## 10120AP Pneumatically Operated Deadlatch



**Swing Chart:** Specify circled swing number when ordering.



\* Indicates both mounting/access plate side.

## TECHNICAL DATA

<b>Standard Finish</b>	Galvanized
<b>Cover</b>	3/16" steel plate
<b>Case</b>	3/16" steel plate
<b>Latchbolt</b>	Cold-rolled steel
<b>Deadlock Actuator</b>	Stainless steel
<b>PARACENTRIC CYLINDER</b>	Silicon bronze/copper alloy
<b>Wire Requirements</b>	When electric operation of the door is from a remote station, a minimum of five conductors (minimum 14 gauge) are required between the control point and the door, except for those models having the letter "K" (keyswitch) in the suffix. Keyswitch models require minimum six conductors.